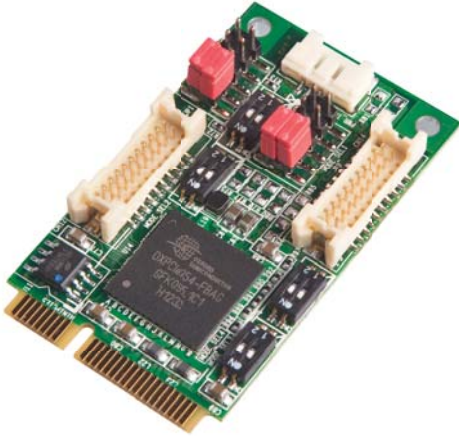


# MEC-COM-M134

## Mini PCI-e 4-port RS-232/422/485 serial board with power input



- Single-Lane (x1) PCI-Express with throughput up to 2.5Gbps
- Fully compliant with PCI-Express Base Specification Rev. 1.1
- Top serial transmission performance up to 921.6 Kbps baud rate
- FIFO 128 Bytes, 15 KV ESD protections on board
- H/W, S/W automate flow control supported
- RS-232/422/485 mode selectable by DIP switches setting
- Each port supports 5V or 12V power output by jumper setting



## Overview

MEC-COM-M134 is a serial communication card for embedded PC. The card follows the Mini PCI-e standard which is complaint with PCI Express x 1 classification and small form factor (30.00 x 50.95 mm). This board fits in any host computer that has Mini PCI-e card slots.

### Top Performance

MEC-COM-M134 has 4 RS-232/422/485 serial ports, each individual port supports 921.6 Kbps baud rate. The combination features 15KV ESD protection, FIFO 128 Bytes, HW/SW automated flow control and extended operating temperature which enhances the board's reliability and performance.

### High Usability

MEC-COM-M134 is designed with flexibilities for many different applications. The Serial RS- 232/422/485 mode can be configured by DIP switches, the power output can be configured by jumper. The accessories (bracket, connection / power input cable) are included in the standard package.

## Specifications

### General

#### PCI-Express Revision:

PCI-Express Base Specification Rev 1.1

#### PCI-Express Electromechanical Revision:

PCI-Express Mini Card Electromechanical Rev. 1.1

### Hardware

**Controllers:** OXPCIe954 (16C550C compatible)

**Bus:** Single-Lane (x1) PCI-Express with throughput up to 2.5Gbps

### Interface (Connector)

**RS-232 / 422 / 485:** 4 (DB9 male)

### Serial Line Protection

**ESD Protection:** 15 KV on board

### Serial Port Power

**Voltage Select:** 5V or 12V

## Performance

**Baud Rate:** Asynchronous baud rates up to 921.6 Kbps

## Serial Communication Parameters

**Data Bits:** 5, 6, 7, 8

**Stop Bits:** 1, 1.5, 2

**Parity:**

- No Parity bit
- Even Parity bit
- Parity bit forced to 0
- Odd Parity bit
- Parity bit forced to 1

**Flow Control:** RTS/CTS, XON/XOFF

## Serial Signals

**RS-232:** TXD, RXD, RTS, CTS, DTR, DSR, DCD, GND, RI

**RS-422:** TxD+, TXD-, RXD+, RXD-

**RS-485:** DATA+, DATA-

## Driver Support

**Operating Systems:**

Win 2003, Win XP, Win Vista, Win 7

## Power Requirement

**Power Consumption:** 665mA@3.3V

## Dimensions

**Width x Length (mm):** 30.00 x 50.95

## Environmental Limits

**Operating Temperature:** -20°C ~ 70°C

**Storage Temperature:** -20°C ~ 85°C

**Humidity:** 5% ~ 95%

## Regulatory Approvals

**EMC:** CE, FCC

**EMI:** EN 55022, EN61000-3-2, EN61000-3-3,  
FCC Part 15 Subpart B  
Class B

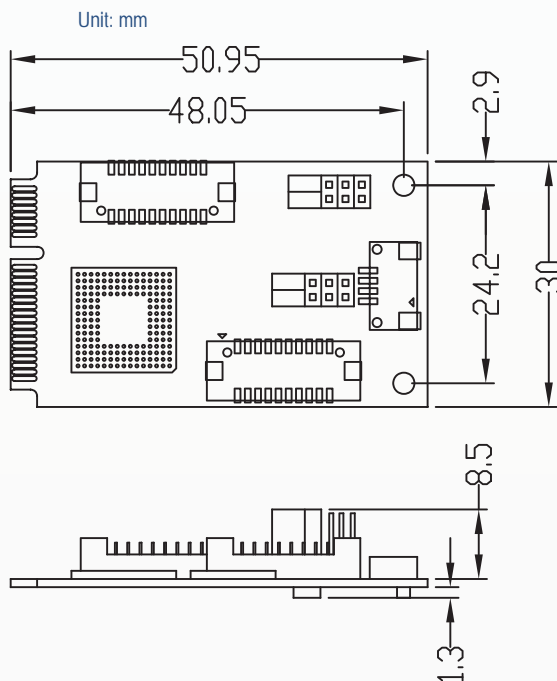
**EMS:** En 55024, IEC 61000-4-2, IEC 61000-4-3,  
IEC 61000-4-4, IEC 61000-4-5, IEC 61000-4-6,  
IEC 61000-4-8, IEC 61000-4-11

## Reliability

**MTBF:** 1,631,268 hr

**Warranty:** 3 years

## Dimensions



## Package Checklist

- Mini PCI-e Card x 1
- Bracket x 2
- 20Pin Internal Cable w/ two DB9 Male Connectors (30cm) x 2
- 4Pin Power Input Cable (30cm) x 1
- Quick Installation Guide (Printed) x 1
- Driver CD x 1



# Ordering Information

## Available Models

MEC-COM-M134

Mini PCI-e 4-port RS-232/422/485 serial board with power input