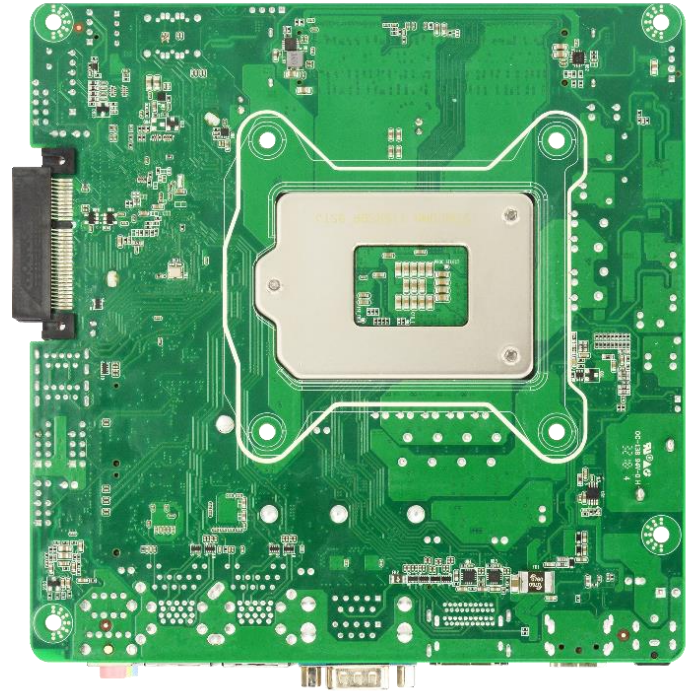
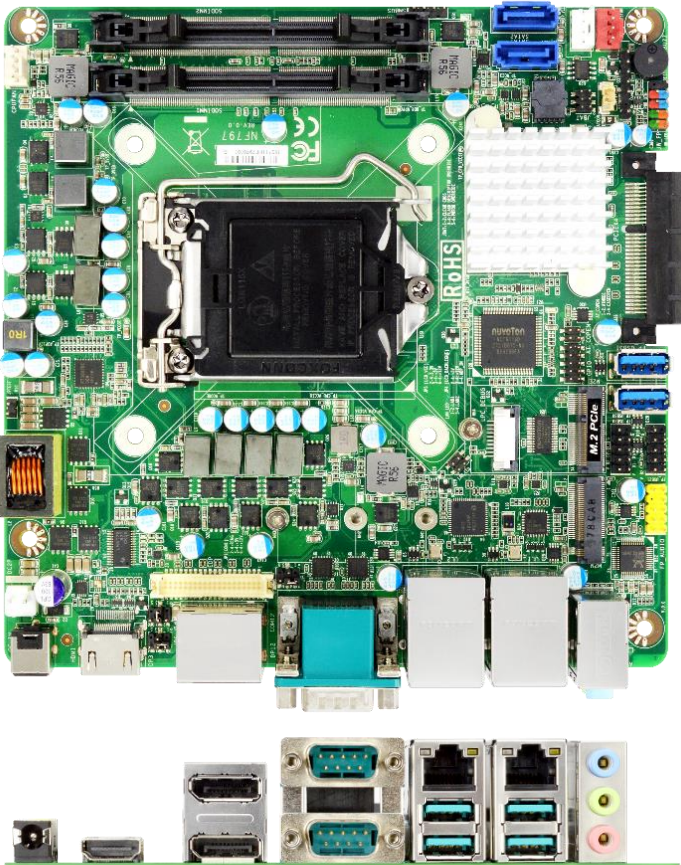


JNF797-Q370

**Mini-ITX Embedded Motherboard, 8th Generation Intel® Core™ i7/ i5 /i3,
Pentium® LGA1151 Socket Processor, Max. 65W TDP**



Overview



The JETWAY JNF797-Q370 is Mini-ITX form factor board adopts the Intel® 8th generation Core i7/i5/i3, Pentium and Celeron Processor. The board supports two SO-DIMM DDR4 2400/2666 MHz memory, up to 32GB. Featuring the integrated Intel® Gigabit Ethernet controller, the JNF797 offers two 10/100/1000Base-TX Ethernet devices for network transmission. Two SATAIII (6Gb/s) interface support RAID 0, 1 offer storage devices. One PCIe x4 interface, one M.2 (E-key 2230), four USB3.1 Gen.2 ports, two COM ports provide versatile expansion. The JNF797 offers one HDMI1.4 port (option with DP1.4), two DP1.4 port and one eDP which can support 3 independent displays. JNF797 have power on board feature that could be more convenient of use condition. Because of the above features, JNF797 is suitable for Digital Signage, Industrial PCs, Factory Automation, Public Sector and Digital Security applications.

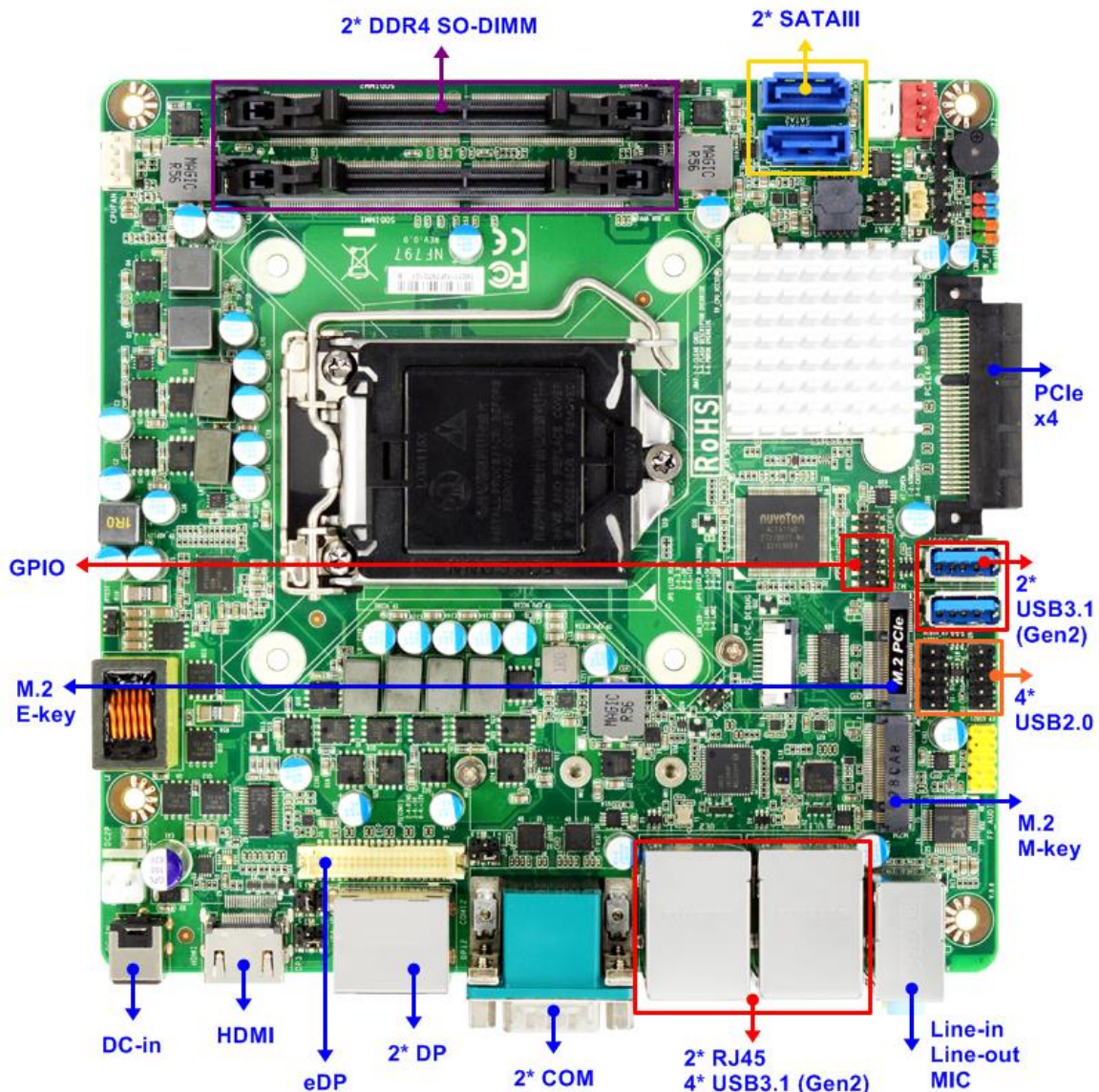
Features

1. Intel® Coffee Lake Processor (Max. 65W TDP).
2. 2 * DDR4 2400/2666MHz SO-DIMM up to 32 GB
3. 2 * 10/100/1000 Base-TX Ethernet Ports
4. 1 * HDMI (option with DP), 2 * DP, 1 * eDP
5. 2 * COM RS232 (RS422/485 option), 6 * USB3.1 Gen.2, 4 * USB2.0
6. 1 * PCIe x4 slot, 1 * M.2 (M-Key 2242/2260/2280), 1 * M.2 (E-key 2230)
7. 2 * SATA III (6Gb/s) support RAID 0, 1
8. Support onboard TPM 2.0
9. Power Onboard Solution

Application

- Digital Signage
- Industrial PCs
- Factory Automation
- Public Sector
- Digital Security

Internal Diagram



Specifications

Model	JNF797-Q370
Form Factor	
Dimensions	- Mini-ITX (6.7-in * 6.7-in, 170 * 170mm)
Processor System	
CPU	- Intel® LGA1151 Coffee Lake Processor (Max. 65W TDP)
Core Number	- (by CPU)
Max Speed	- (by CPU)
L2 Cache	- (by CPU)
Chipset	- Q370
BIOS	- AMI Flash ROM
Expansion Slot	
PCI	- 0
Mini-PCIe	- 0
mSATA	- 0
PCIe	- 1 (PCIex4 slot) , Support NVMe
M.2	- 1 (PCIex4 with SATA interface, M-Key 2242/2260/2280) - 1 (PCIe interface, E-key 2230)
CFast Card Socket	- 0
CF Card Socket	- 0
SIM Card slot	- 0
Memory	
Technology	- DDR4 2400/2666 MHz Dual CH SDRAM non-ECC
Max.	- 32GB
Socket	- 2 * SO-DIMM
Graphics	
Controller	- Intel® HD Graphics
VRAM	- Shared Memory
VGA	- 0
LVDS	- 0
eDP 1.3	- 1 (Max Resolution: 4096x2304@60Hz)
HDMI 1.4	- 1 (default, option with DP) (Max Resolution: 4096x2160@30Hz)
DVI-D	- 0
DisplayPort	- 2 (Max Resolution: 4096x2304@60Hz)
Multi Display	- Triple Displays

Ethernet	
Ethernet	- 10/100/1000 Mbps
Controller	- 2 * Intel GbE (1 * i219-LM, 1 * i211-AT)
Connector	- 2 * RJ45
Audio	
CODEC	- HD Audio: Realtek ALC662VD
Channel	- 6 Channel
SATA	
Max Data Transfer Rate	- 2 * SATAIII support RAID 0, 1
Rear I/O	
VGA	- 0
DVI-D	- 0
HDMI	- 1 (default, option with DP)
DisplayPort	- 2
Ethernet	- 2
USB	- 4 * USB 3.1 (Gen. 2)
Audio	- 3 (Line-In, Line-Out, MIC)
Serial	- 2 COM RS232 (RS422/485 option)
eSATA	- 0
PS/2	- 0
DC-input	- 1
Internal Connector	
USB	- 2 * USB3.1 (Gen. 2), 4 * USB 2.0
PS/2	- 1
LVDS / inverter	- 0
eDP	- 1
VGA	- 0
Serial	- 0
SATA	- 2 * SATAIII
SIM card slot	- 0
mPCIe	- 0
mSATA	- 0
M.2	- 1 (M-Key 2242/2260/2280) - 1 (E-key 2230)
GPIO	- 1 (8 bit)
Chassis intrusion	- 1
Audio Header	- 0

SMBUS/ I2C	- 1
AT mode	- 1
TPM	- Yes (onboard TPM 2.0)
Other	- 0
Watchdog Timer	
Output	- From Super I/O to drag RESETCON#
Interval	- 256 segments (10sec ~ 255min)
Power Requirements	
Input PWR	- 9 ~ 36V DC in
Power On	AT/ATX Supported - AT: Directly PWR on as Power input ready - ATX: Press Button to PWR on after Power input ready
Certifications	
Certifications	- CE, FCC, LVD, RoHS, REACH
Environment	
Temperature	- Operating: 0°C ~ 60°C
	- Storage: -20°C ~ 85°C
Warranty	
Warranty	- 2 Years Limited Warranty
Packing	
Packing	- Net Weight: - Gross Weight: - Color Box dimension:

*Specifications subject to change without notice, not responsible for typographical errors. Does not include HDD or OS.

Optional Accessories

Part Number	Description
	JNF797 M/B
	JNF797 I/O shield
G03-NF797-F	IPC JNF797 User's Manual
	CD Driver
G01-SATA3-BL-1F	SATAIII cable

Mechanical Drawings (Unit = mm)

