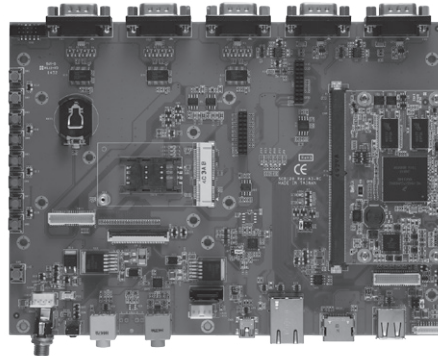


# SCM120-120-EVK

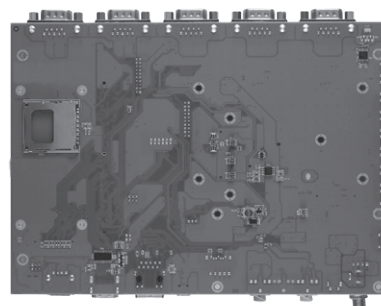
SMARC v1.0 SoM Evaluation Kit with Quad/DualLite 800 MHz (Industrial)  
SoC, 1GB Memory, 4GB eMMC, Gigabit Ethernet, Audio, CAN, MIPI and PCAM

## Features

- Ultra low power consumption Cortex™-A9
- 2 CAN 2.0B
- 24-bit TTL LCD
- LVDS/HDMI 1080P
- 10/100/1000 Mbps Ethernet
- Open GL ES2.0
- Linux 3.0.35/Android 4.3
- Audio



▲ Front view



▲ Rear view

## Core System

Processor	Freescall i.MX6 Quad/DualLite ARM Cortex™-A9 CPU 800 MHz (On SCM120 SoM)
System Memory	Onboard DDR3-1600, up to 1GB (on SCM120 SoM)
OS	Linux kernel 3.0.35, Android 4.3
RTC	Battery on the Baseboard is required
Power Requirement	+5V ± 5%, 5A
Size	200 x 140 mm
Board Thickness	1.6 mm ± 0.15mm
Operation Humidity	10% ~ 95%, non-condensing

## I/O

Graphics	1 x 24-bit TTL LCD 1 x HDMI 1080P 1 x Dual channel 24-bit LVDS
Ethernet	1 x RJ-45 for 10/100/1000 Mbps
Audio	MIC-in
COM	1 x COM with TX/RX/RTS/CTS 1 x Console port
USB	2 x USB 2.0: 1 OTG client and 1 Host
I <sup>2</sup> C	4 x I <sup>2</sup> C Interface
CAN	2 x D-Sub 9-pin male connectors for 2.0B protocol-compatible controller Area Network (CAN) interfaces
Keypad	8 button-detect circuit
Storage	1 x SD/MMC socket 1 x SATA connector SPI nor Flash
Touch	4-wire touch screen controller
Mini Card	1 x full-size (with SIM)
Extension Slot and Socket	1 x connector with I <sup>2</sup> C/SPI/UART
MIPI	1 x serial camera
PCAM	1 x PCAM 8-bit

## Ordering Information

Standard	
SCM120-120 EVK- DualLite-I	SCM120-120 (DualLite-I) evaluation kit board)
SCM120-120 EVK-Quad-I	SCM120-120 (Quad) evaluation kit board)

Optional	
P/N: 5078S120100E	SCM120 heatspread (-40°C ~ +70°C)
P/N: 5078Q120200E	Heatsink (-40°C ~ +75°C)

## Packing list

N/A	- USB OTG cable - Console port cable - Power cable - AC DC adapter 5V/5A 25W - Utility CD
-----	---