

MP-Z9S

User's Manual

Edition 1.0
2011/11/24



Copyright

Copyright 2011 all rights reserved. This document is copyrighted and all rights are reserved. The information in this document is subject to change without prior notice to make improvements to the products.

This document contains proprietary information and protected by copyright. No part of this document may be reproduced, copied, or translated in any form or any means without prior written permission of the manufacturer.

All trademarks and/or registered trademarks contains in this document are property of their respective owners.

Disclaimer

The company shall not be liable for any incidental or consequential damages resulting from the performance or use of this product.

The company does not issue a warranty of any kind, express or implied, including without limitation implied warranties of merchantability or fitness for a particular purpose.

The company has the right to revise the manual or include changes in the specifications of the product described within it at any time without notice and without obligation to notify any person of such revision or changes.

Trademark

All trademarks are the property of their respective holders.

Any questions please visit our website at <http://www.commell.com.tw>.

Packing List:

Hardware:

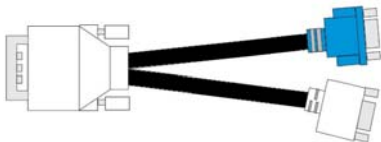
MP-Z9S Mini PCI Graphics Card x1

Cable kit:

Cable:



One 10-pin DF14 Cable with DVI Module
(OALDVI-DF14 + BADPDVIP)



DVI VGA Cable x 1 (Option)
(OALDVIVGA)

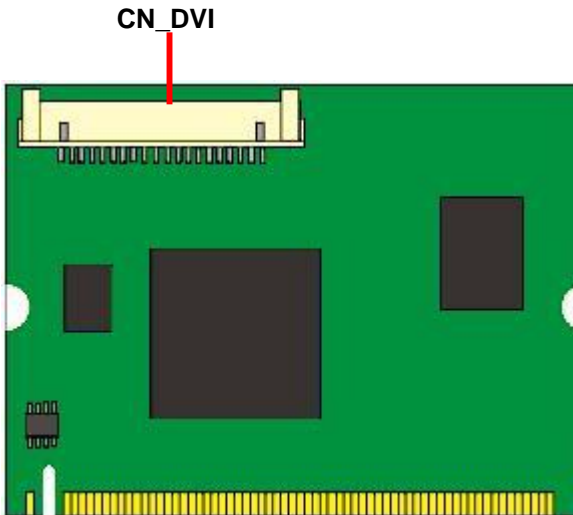
CD Content:

Drivers & User's Manual

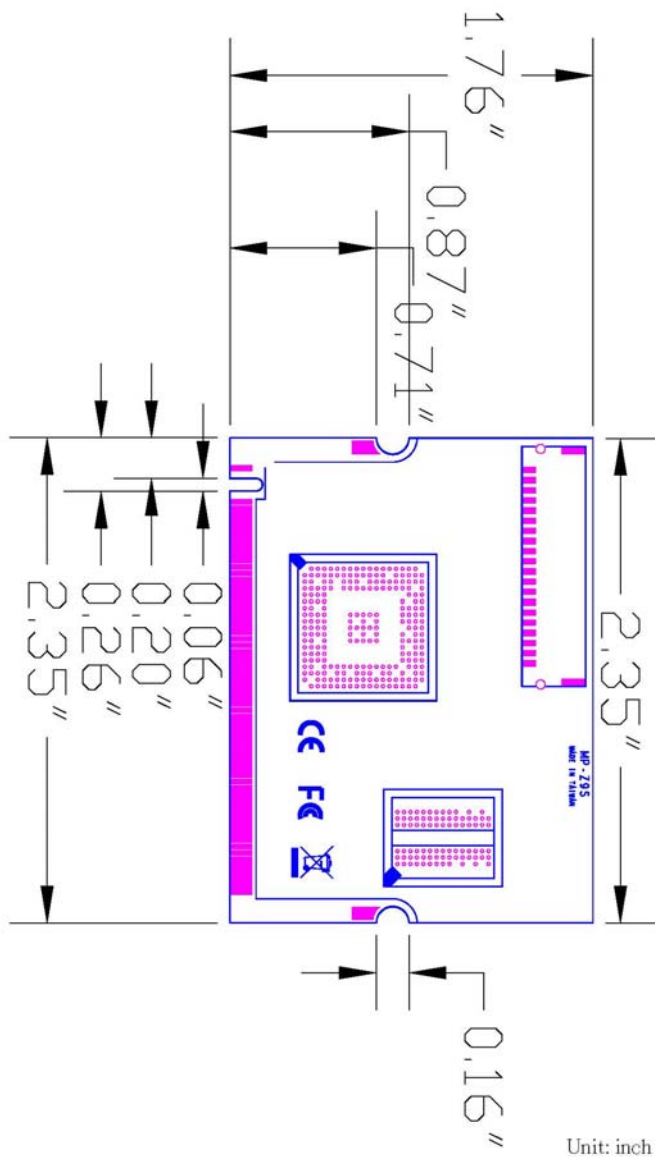
1.0 <Product Specification>

General Specification	
Form Factor	Mini PCI card
Controller	GPU XGI Volari™ Z9S chip
Accessories	One 10-pin DF14 to 26 pin-header Cable with DVI Module One DVI to DVI-I (VGA & DVI) Cable (Option)
Resolution	DVI (1600 x 1200@ 60Hz) CRT (1920 x 1200@60Hz)
Video Memory	32MB DDR2 SDRAM
OS Support	Windows XP / 2K, Vista, Win 7, Linux
Dimensions (L x W)	60mm x 45mm

1.1 <Component Placement>



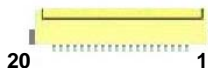
1.2 <Mechanical Drawing>



1.3 <Connector Reference>

Connector: CN_DVI

Type: DF14 10-pin pitch=1.25mm



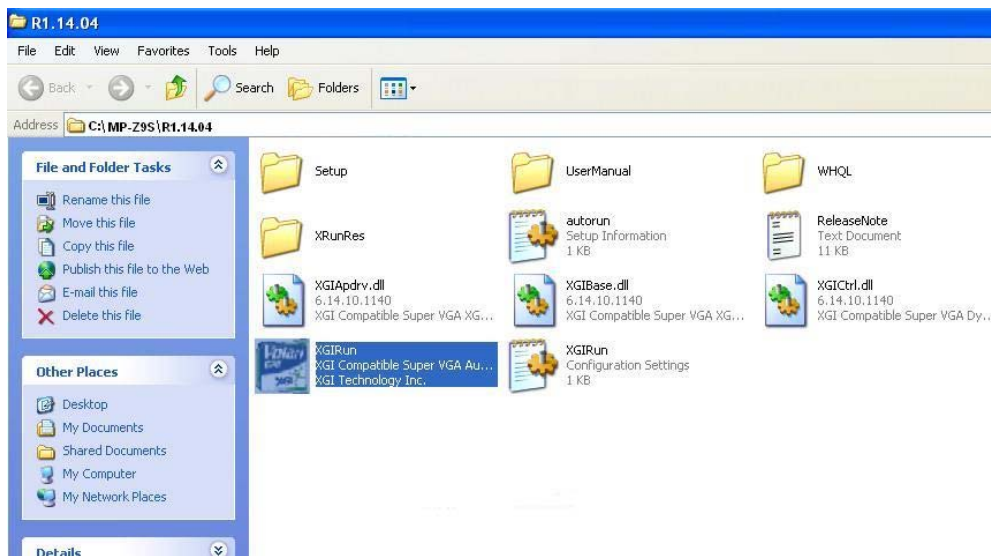
Pin	Description	Pin	Description
1	TDC_1+	2	TDC_1-
3	TDC_+	4	TDC_-
5	TDC_0+	6	TDC_0-
7	TDC_2+	8	TDC_2-
9	PVDD (+5V)	10	DVI_DHP (Hot Plug)
11	GND	12	DDCDAT
13	DDCCLK	14	GND
15	CRT_R	16	CRT_G
17	CRT_B	18	CRT_HSYNC
19	CRT_VSYNC	20	GND

1.4 <Driver Setting>

1. Copy the CD Driver folder to disk, Ex: C:\ , D:\ ...

2. Please select file location

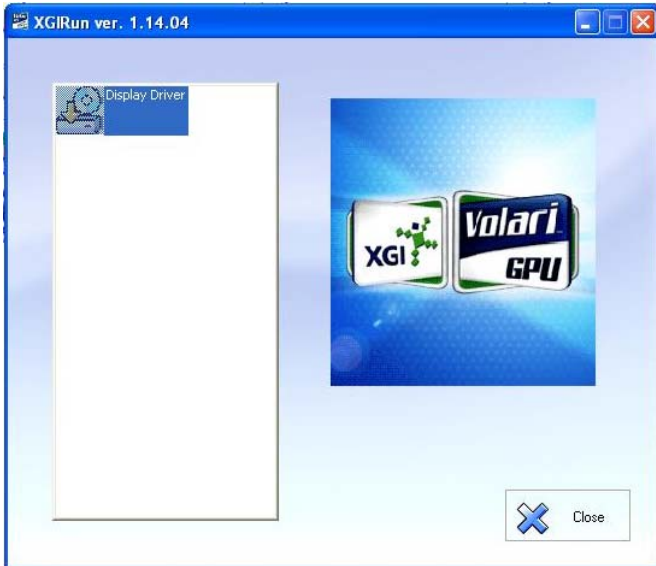
C:\MP-Z9S\R1.14.04



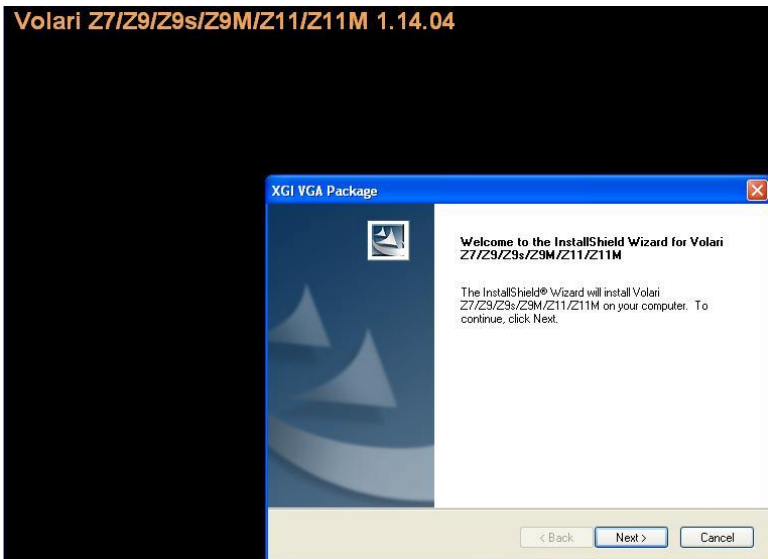
3. Please choose **XGIRun**



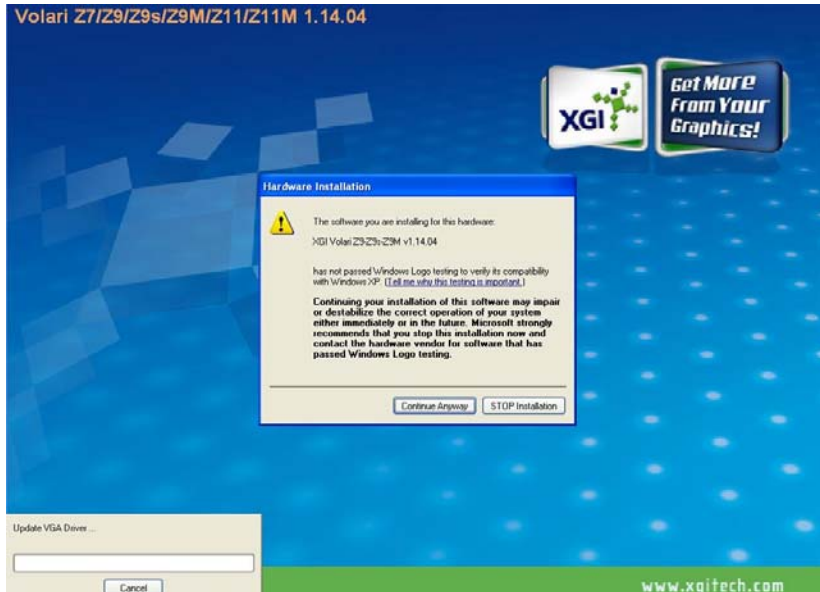
4. Please click “Display Driver” to install.



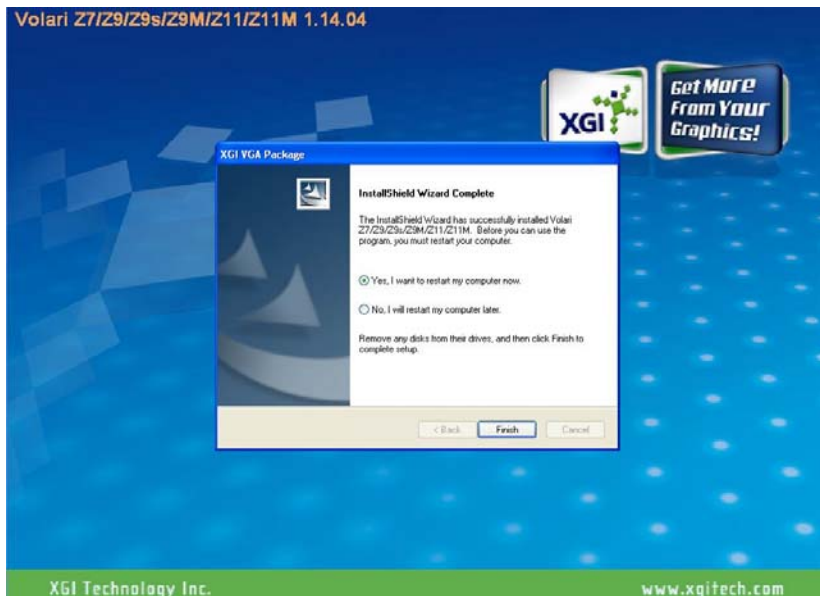
5. Please click “Next”.



6. Please click “Continue Anyway”.



7. Please click “Finish”.



Contact Information

Any advice or comment about our products and service, or anything we can help you please don't hesitate to contact with us. We will do our best to support you for your products, projects and business.

Taiwan Commate Computer Inc.

Address	19F., .94, Sec. 1, Xintai 5th Rd., Xizhi Dist., New Taipei City 22102, Taiwan (R.O.C.)
TEL	+886-2-26963909
FAX	+886-2-26963911
Website	http://www.commell.com.tw
E-Mail	info@commell.com.tw (General Information) tech@commell.com.tw (Technical Support)

Commell is the trademark of Taiwan Commate Computer INC.