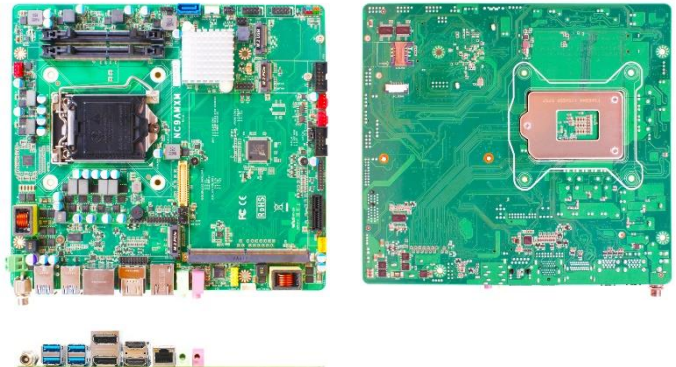




# JNC9AMXM-H310

Intel® Coffee Lake-S H310 Chip, support LGA1151 CPU, DDR4 up to 32GB, 12~36V DC-in

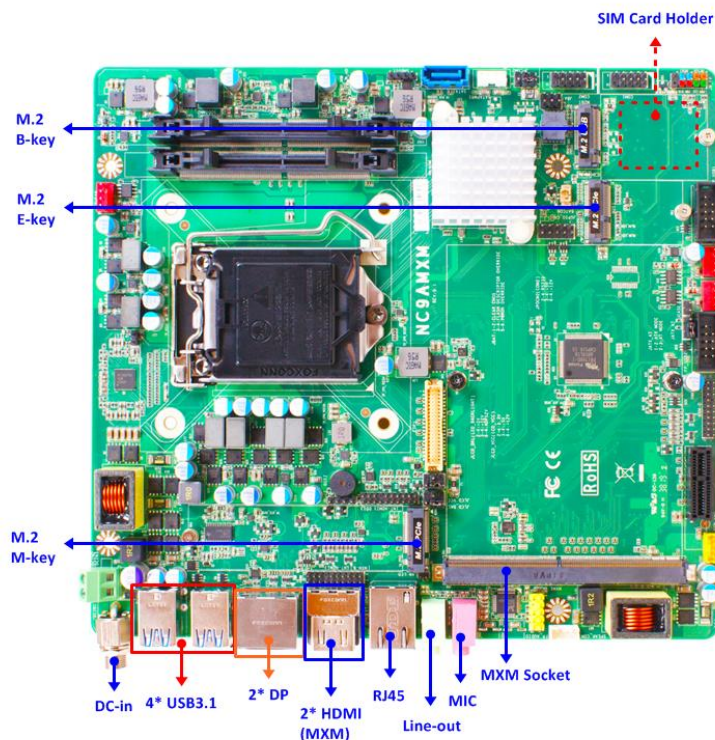
1. Intel® LGA1151 Socket Core I3,I5,I7 Pentium Processor
2. Intel® Coffee Lake-S H310 Chip
3. Support Dual Channel DDR4 2133MHz SO-DIMM up to 32GB
4. Support 1\* MXM VGA Card Socket (MXM:90W)
5. 1\* SATA III (6Gb/s) & M.2 (M key 2280, NVMe), 1\* PCI-E x1, 1\* M.2 E key Support CNVi, 1\* M.2 B key Support 3G/4G Module
6. 1\* Intel® I219LM GbE, 2\* RS232 (COM2 Support 5V/12V TTL), 4\* External USB3.1, 4\* Internal USB2.0
7. 12 ~ 36V DC-in
8. Form Factor: 220 \*200mm



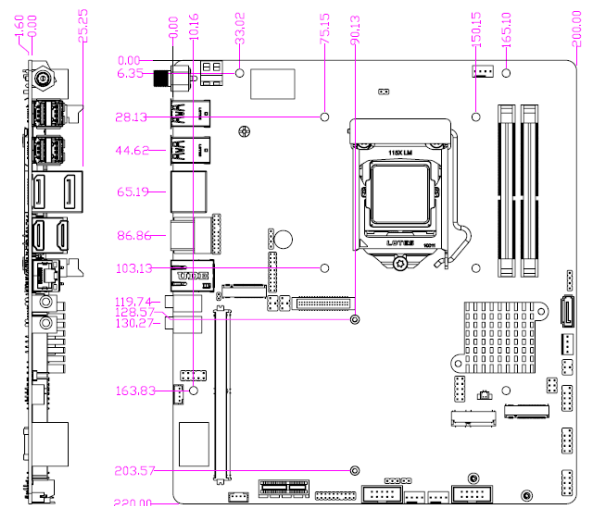
## Application

Multimedia / Autopilot

## I/O Diagram



## Mechanical Drawings (Unit = mm)



## Specifications

<b>Model</b>	<b>Form Factor</b>
JNC9AMXM-H310	SBC (220 * 220mm)
<b>Processor System</b>	<b>Expansion Slot</b>
<ul style="list-style-type: none"><li>Intel® LGA1151 Coffee Lake Series Processor (Max 90W)</li><li>H310 /Q370 chipset</li><li>AMI 128M Flash ROM BIOS</li></ul>	<ul style="list-style-type: none"><li>1* M.2 M Key (2280, for NVMe)</li><li>1* M.2 E Key (2230, support CNVi)</li><li>1* M.2 B Key (3042, support 3G/4G Module)</li><li>1* SATA</li><li>1* PCIe x1 slot</li><li>1* MXM Card Socket (Max: 90W)</li><li>1* SIM Card holder</li></ul>
<b>Memory</b>	<b>Graphics</b>
2* SO-DIMM DDR4 2400MHz SO-DIMM Dual CH up to 32GB	<b>Graphics 1</b> <ul style="list-style-type: none"><li>Intel® HD Graphics, shared memory</li><li>1* eDP 1.2 (Max Resolution : 4096x2304@60Hz, by CPU)</li><li>1* DP (Max Resolution : 4096x2304@60Hz, by CPU)</li><li>1* HDMI (Max Resolution : 4096x2304@24Hz, by CPU)</li></ul> <b>Graphics 2</b> <ul style="list-style-type: none"><li>1* DP, by MXM VGA Card</li><li>3* HDMI, by MXM VGA Card</li><li>Support 6 Displays</li></ul>
<b>Ethernet</b>	<b>Audio</b>
1* Intel® I219LM GbE	<ul style="list-style-type: none"><li>HD audio: Realtek ALC662VD</li><li>1* Line-out, 1* MIC</li></ul>
<b>SATA</b>	<b>Rear I/O</b>
1* SATAIII (6.0Gb/s)	<ul style="list-style-type: none"><li>2* HDMI</li><li>2* DP</li><li>1* RJ45</li><li>4* USB3.1</li><li>Line-Out, MIC</li><li>9~36 V DC-in</li></ul>
<b>Internal Connector</b>	<b>Watchdog Timer</b>
<ul style="list-style-type: none"><li>4* USB 2.0</li><li>1* eDP</li><li>2* HDMI</li><li>2* COM (COM2 support 5V/12V TTL)</li><li>1* SATAIII (6.0Gb/s)</li><li>3* M.2 (M key, E key, B key)</li><li>1* 8bit GPIO</li><li>1* Chassis intrusion</li><li>1* Audio Header</li><li>1* 3W AMP Speaker</li><li>1* SMBUS/ I2C</li><li>1* AT mode</li></ul>	<ul style="list-style-type: none"><li>From Super I/O to drag RESETCON#</li><li>256 segments (10sec ~ 255min)</li></ul>
<b>Power</b>	<b>Compliance</b>
<ul style="list-style-type: none"><li>12~36V DC-in</li><li>AT/ATX Supported</li><li>- AT : Directly PWR on as Power input ready</li><li>- ATX: Press Button to PWR on after Power input ready</li></ul>	CE, FCC, RoHS, REACH
<b>Temperature</b>	<b>Warranty</b>
<ul style="list-style-type: none"><li>Operating: 0°C ~ 60°C</li><li>Storage: -20°C ~ 85°C</li></ul>	2 Years Limited Warranty

\* Specifications subject to change without notice, not responsible for typographical errors. Does not include HDD or OS.

## Accessories

Parts Number	Description	Parts Number	Description
-----	JNC9AMXM-H310 M/B	G01-PW4PS-SA15-F	SATA Power Cable L=350mm
G01-SATA3-BL-1F	SATA3 Cable 50cm Blue w/LOCK	F04-MB-0XX-F	NC9AMXM
G01-COM-H2M22-1F	COM Cable CNN-2mm Head L=220mm K=10		